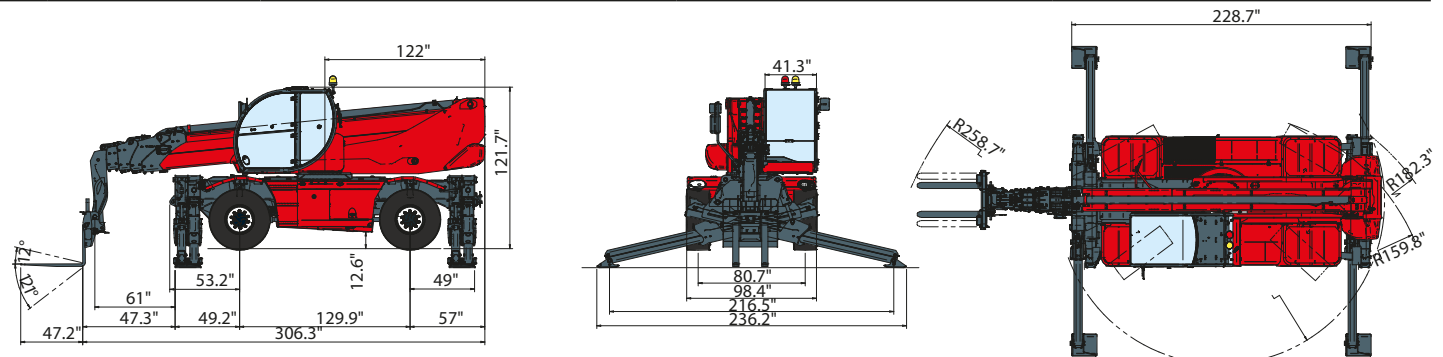


RTH6.30SH

<b>MACHINE MODEL</b>	Rotating telescopic handler	RTH 6.30SH	
	Maximum lifting capacity	13.200 lbs (center of gravity 24 in)	
	Maximum lifting height	98,09 ft	
	Rotation	360° (continuous)	
<b>ENGINE - MERCEDES</b>	Type	Mercedes OM 934 LA Stage IV	Mercedes OM 924 LA Stage 3A
	Rated power	150 kW - 203 HP at 2.200 rpm	145 kW - 196 HP at 2.200 rpm
	Maximum torque	800 Nm at 1.200-1.600 rpm	705 Nm at 1.200-1.600 rpm
	Displacement	1,53 gal	1,26 gal
	Cylinders	4 in line	4 in line
	Fuel	Diesel direct injection turbocharged	
	Cooling system	Water – intercooler	
<b>TRANSMISSION</b>	Type	Hydrostatic	
	Model	Bosch – Rexroth	
	Maximum pressure	500 bar	
	Displacements	Variable displacement pump electronically controlled. Variable displacement motor.	
<b>AXLES AND BRAKES</b>	Gear box	2 speeds forward-reverse	
	Type	Axles with epicyclic reduction gear	
	Rear axle	Oscillating and steering with hydraulic locking	
	Front axle	Oscillating and steering with automatic levelling +/- 10°	
	Service brake	Hydraulically activated, oil-immersed multi-disc type on each axle	
	Parking brake	Hydraulic with negative action	
<b>PERFORMANCE</b>	Tyres dimensions	445/65 R 22,5	
	Max. travel speed	25 Mph	
	Drawbar pull	80 kN	
	Gradeability	40%	
<b>WEIGHTS</b>	Turning radius (end of forks)	257,8 in	
	Total unladen	48.127 lbs	
	Front axle unladen (boom retracted and lowered)	23.877 lbs	
<b>TANKS</b>	Rear axle unladen (boom retracted and lowered)	24.250 lbs	
		Mercedes stage IV	Mercedes stage 3A
	Fuel tank	47 US gal	47 US gal
	AdBlue	10 US gal	n.a.
	Hydraulic oil tank	49 US gal	49 US gal
	Engine oil tank	5 US gal	5 US gal
<b>HYDRAULIC CIRCUIT</b>	Cooling liquid	9 US gal	9 US gal
	Max. operating system pressure	350 bar	
	Circuit type	Load sensing	
	Service pump	Bosch Rexroth – Variable displacement	
	Controls for boom and turret movements	Danfoss – Electroproportional valve SIL 2	
<b>CONFORMITY TO STANDARDS</b>	Controls for stabilizers	Bosch Rexroth – Electro-hydraulics controls	
	Movements control	2 joystick Danfoss with two shafts with dead man safety device - Management with CAN bus technology	
EN 13849: concerning the safety of all controls of the machine EN 13000: concerning the standard of hydraulic cranes EN 280: concerning the standard of aerial platforms FOPS/ROPS EU 2016/1628: concerning engine emissions standards EN 1459-2: concerning the standard of self-propelled variable reach trucks			



The data in this brochure are informative and subject to change without notice



Maximum lifting height: 97,9 ft  
 Maximum reach: 85,4 ft  
 Electronically controlled hydrostatic transmission  
 Automatic levelling device  
 Scissors stabilizers

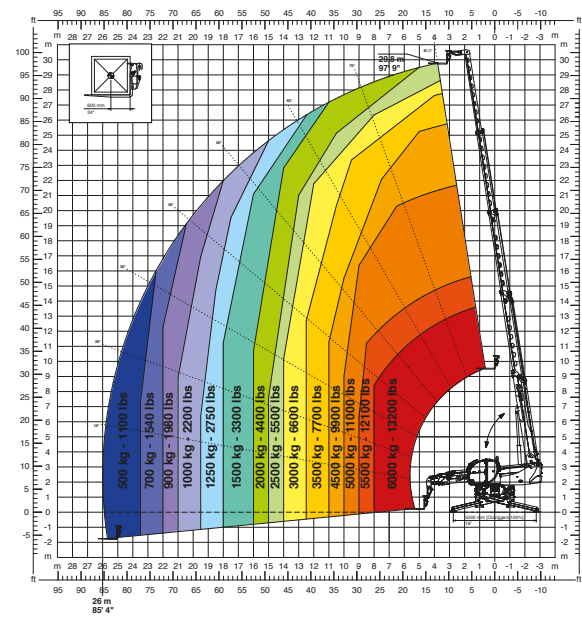
tracce.com

REV07

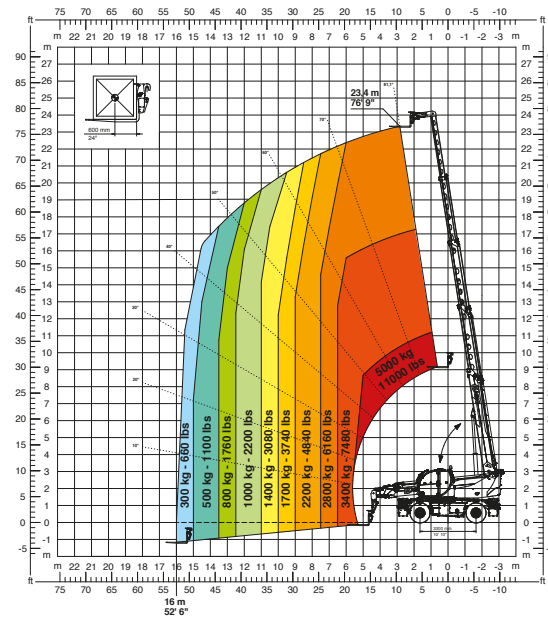
# RTH6.30SH

**Magni Telescopic Handlers srl**  
 Via Magellano, 22 - 41013 Castelfranco Emilia, Modena, Italia - Tel: +39 059 8630811 - Fax: +39 059 8638012  
 commerciale@magnith.com - www.magnith.com

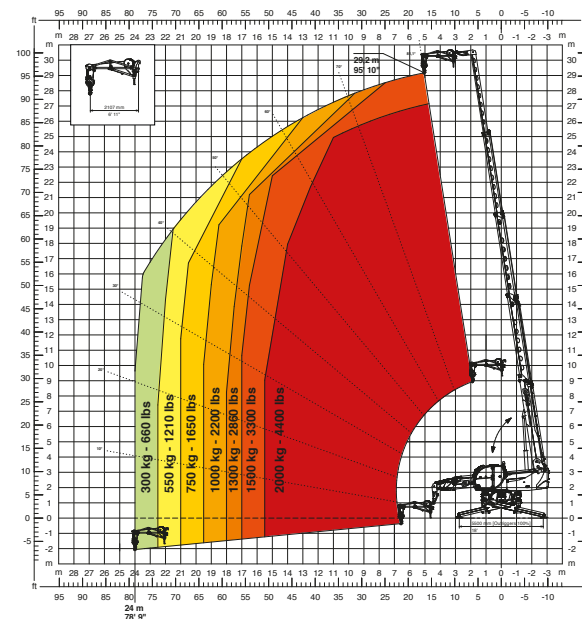
360° fully extended stabilizers load chart with forks



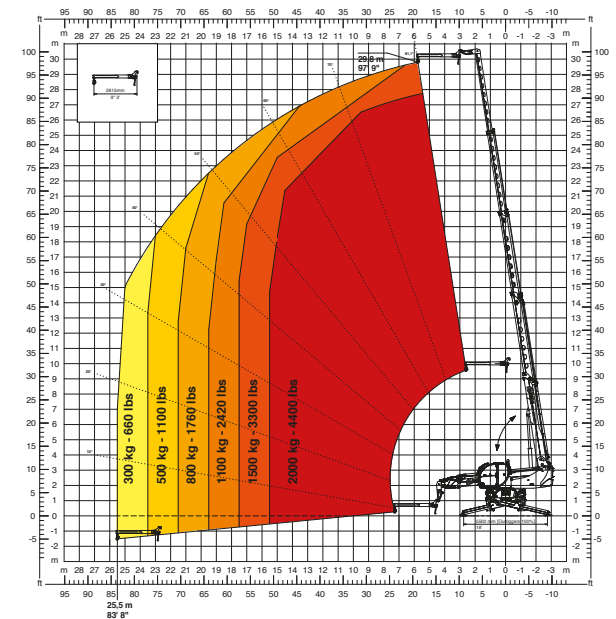
Frontal position load chart on tyres with forks



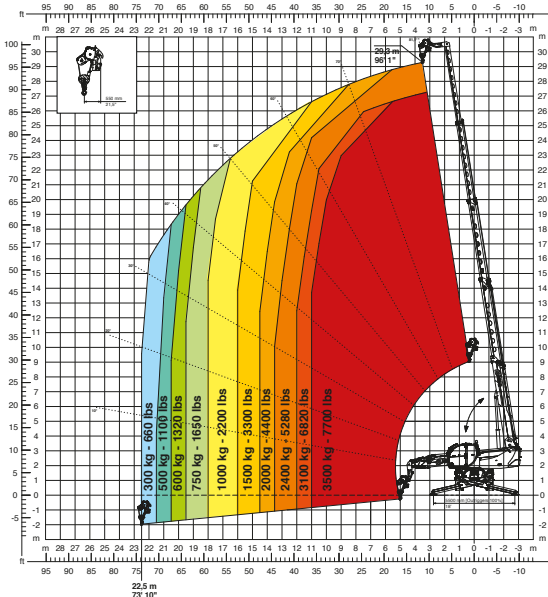
**JW 2000**  
Jib winch 4400 lbs



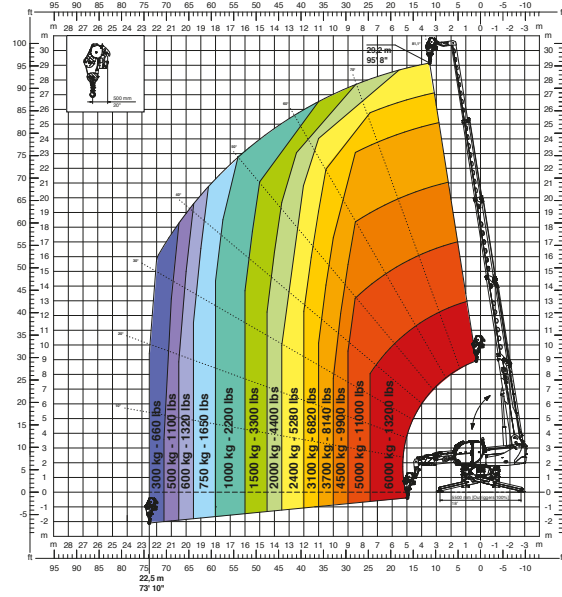
**J 2000**  
Jib 4400 lbs



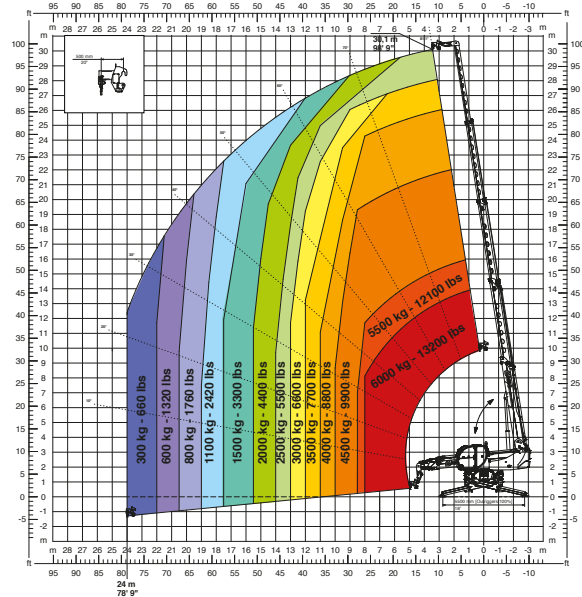
**W 3,5**  
Winch 7700 lbs



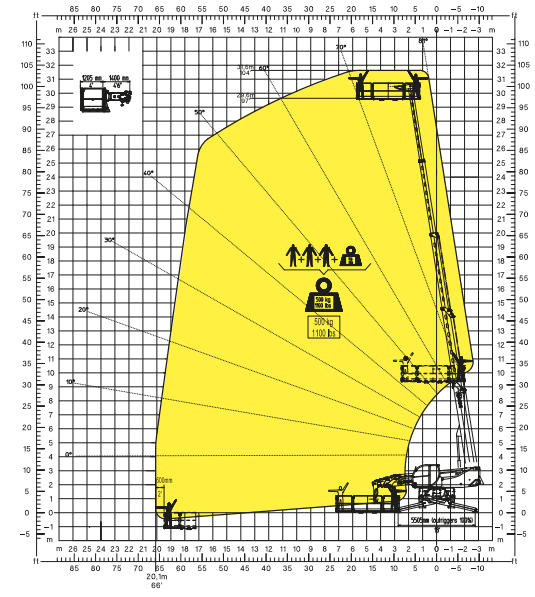
**W 6**  
Winch 13200 lbs



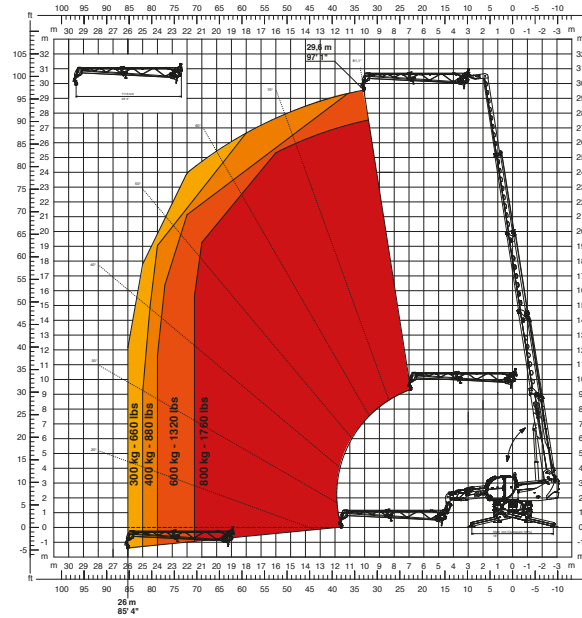
**H 6**  
13200 lbs hook



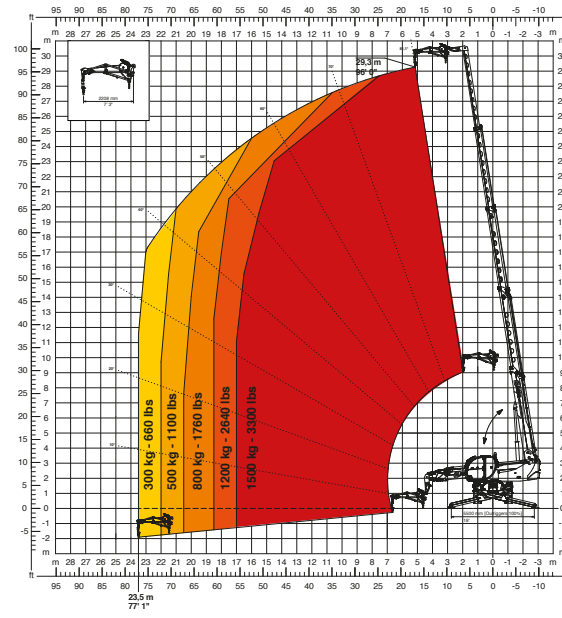
**REP 2-4,5**  
Rotating extendable men platform 1100 lbs



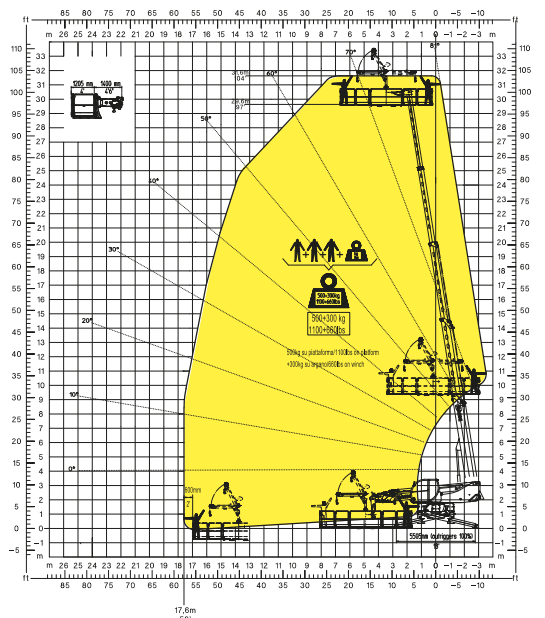
**JW 800**  
Jib winch 1760 lbs



**JW 1500**  
Jib winch 3300 lbs



**REP 5.2-6.5 W0.3**  
Platform 1100 lbs with winch 660 lbs



**REP 10.2-4,7**  
Rotating extendable men platform 2200 lbs

