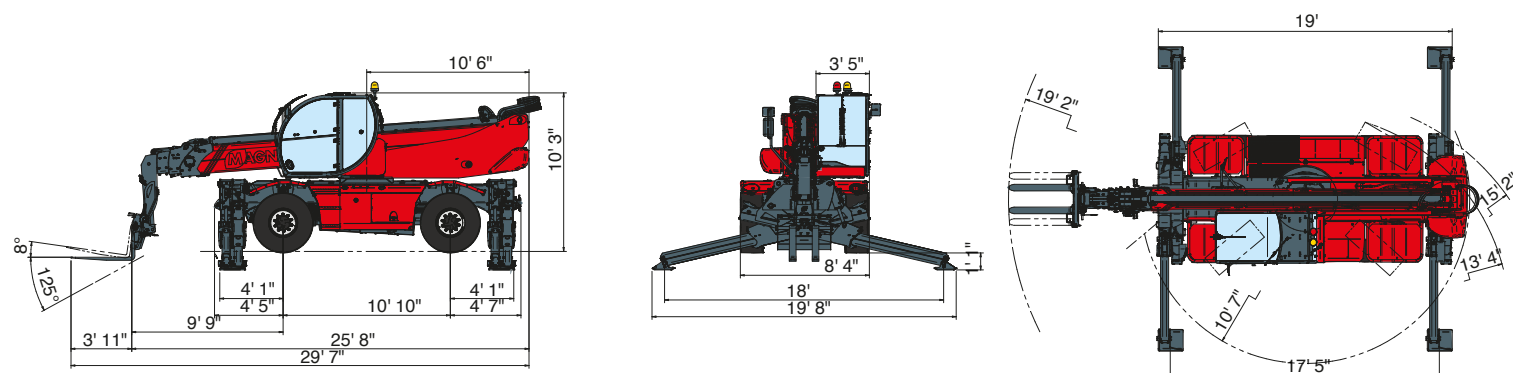


RTH6.26SH

MACHINE MODEL	Rotating telescopic handler	RTH 6.26 SH	
	Maximum lifting capacity	13.200 lbs (center of gravity 24 in)	
	Maximum lifting height	84,3 ft	
	Rotation	360° (continuous)	
ENGINE - MERCEDES	Type	Mercedes OM 934 LA Stage IV	Mercedes OM 904 LA Stage 3A
	Rated power	129 kW - 175 HP at 2.200 rpm	129 kW - 175 HP at 2.200 rpm
	Maximum torque	750 Nm at 1.200-1.600 rpm	675 Nm at 1.200-1.600 rpm
	Displacement	1,53 gal	1,26 gal
	Cylinders	4 in line	4 in line
	Fuel	Diesel direct injection turbocharged	
	Cooling system	Water – intercooler	
	TRANSMISSION	Type	Hydrostatic
Model		Bosch – Rexroth	
Maximum pressure		500 bar	
Displacements		Variable displacement pump electronically controlled Variable displacement motor	
Gear box		2 speed drop box forward-reverse	
AXLES AND BRAKES	Type	Axles with epicyclic reduction gear	
	Rear axle	Oscillating and steering with hydraulic locking	
	Front axle	Oscillating and steering with automatic levelling +/- 10°	
	Service brake	Hydraulically activated, oil-immersed in-board multi-disc type on each axle	
	Parking brake	Hydraulic with negative action	
	Tyres dimensions	445/65 R 22,5	
PERFORMANCE	Max. travel speed	25Mph	
	Drawbar pull	80 kN	
	Gradeability	42%	
	Turning radius (end of forks)	19,2 ft	
WEIGHTS	Total unladen	44.205 lbs	
	Front axle unladen (boom retracted and lowered)	19.955 lbs	
	Rear axle unladen (boom retracted and lowered)	24.250 lbs	
TANKS CAPACITIES	Fuel tank	47 US gal	47 US gal
	AdBlue	10 US gal	n.a.
	Hydraulic oil tank	49 US gal	49 US gal
	Engine oil tank	5 US gal	5 US gal
	Cooling liquid	9 US gal	9 US gal
HYDRAULIC CIRCUIT	Max. operating system pressure	350 bar	
	Circuit type	Load sensing	
	Service pump	Bosch Rexroth – Variable displacement	
	Controls for boom and turret movements	Danfoss – Electroproportional valve SIL 2	
	Controls for stabilizers	Bosch Rexroth – Electro-hydraulics controls	
	Movements control	2 joystick Danfoss with two shafts with dead man safety device - Management with CAN bus technology	
CONFORMTY TO STANDARDS	EN 13849: concerning the safety of all controls of the machine EN 13000: concerning the standard of hydraulic cranes EN 280: concerning the standard of aerial platforms FOPS/ROPS EU 2016/1628: concerning engine emissions standards EN 1459-2: concerning the standard of self-propelled variable reach trucks		



The data in this brochure are informative and subject to change without notice

tracce.com

REV07

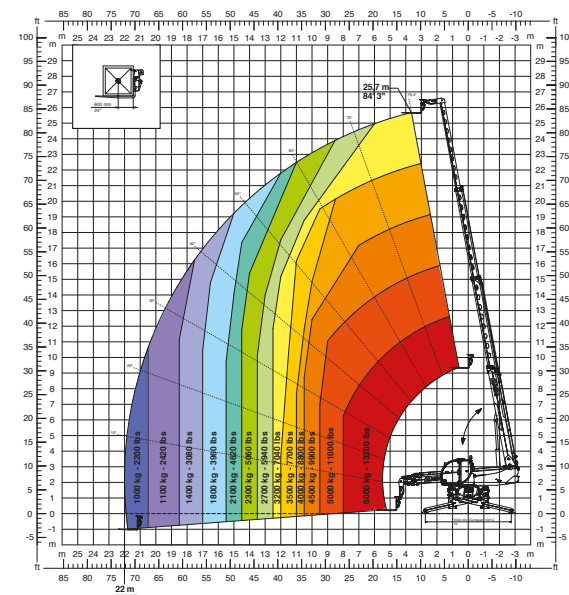


Maximum lifting height: 84,3 ft
 Maximum reach: 72,2 ft
 Electronically controlled hydrostatic transmission
 Automatic levelling device
 Scissors stabilizers

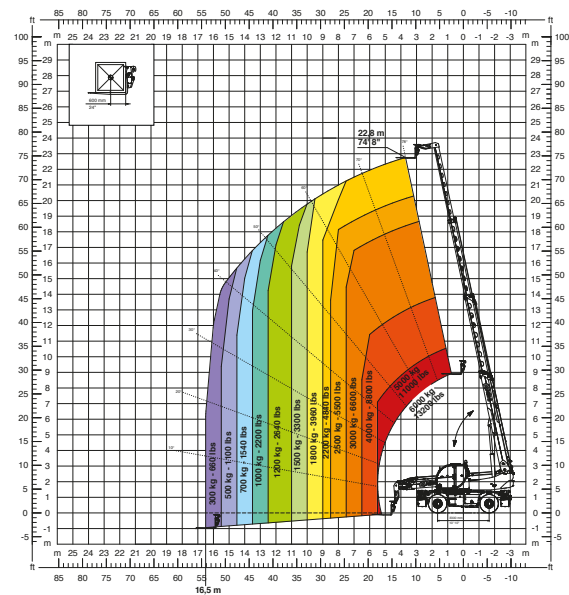
RTH6.26SH

Magni Telescopic Handlers srl
 Via Magellano, 22 - 41013 Castelfranco Emilia, Modena, Italia - Tel: +39 059 8630811 - Fax: +39 059 8638012
 commerciale@magnith.com - www.magnith.com

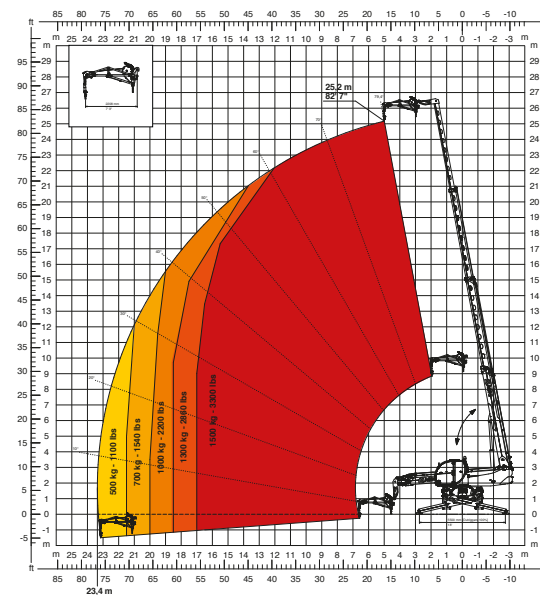
360° fully extended stabilisers load chart with forks



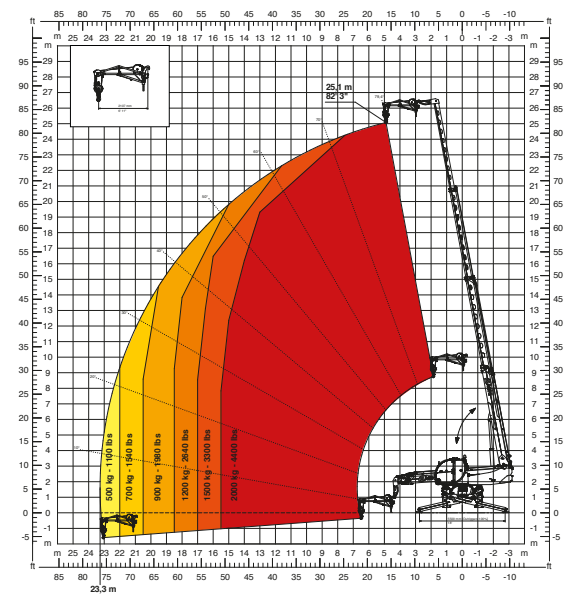
Frontal position load chart on tyres with forks



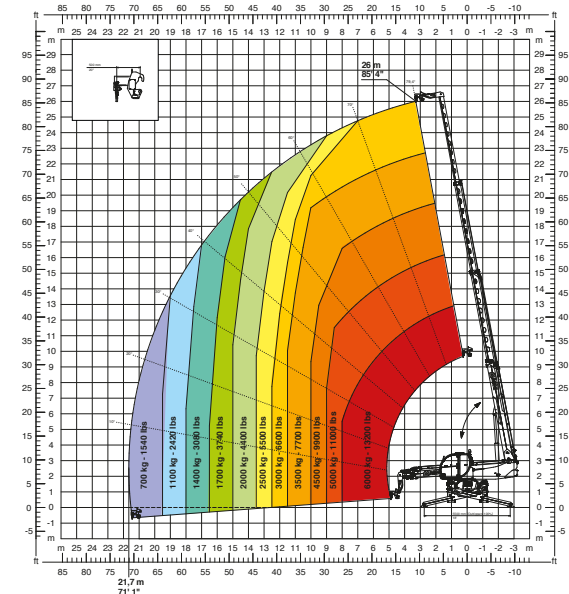
JW 1500
Jib winch 3300 lbs



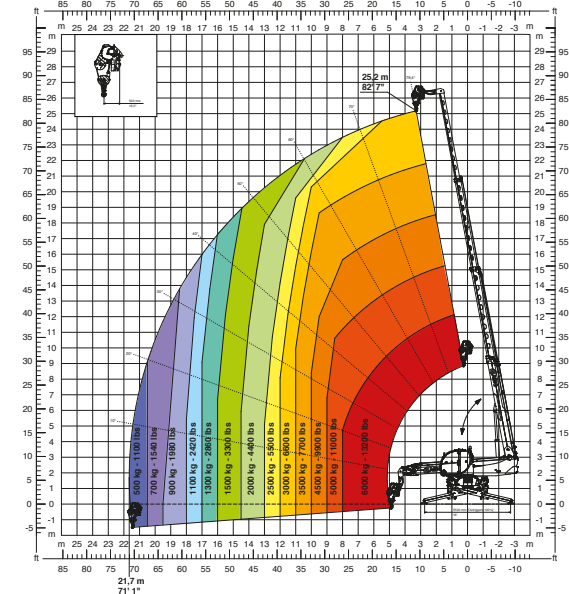
JW 2000
Jib winch 4400 lbs



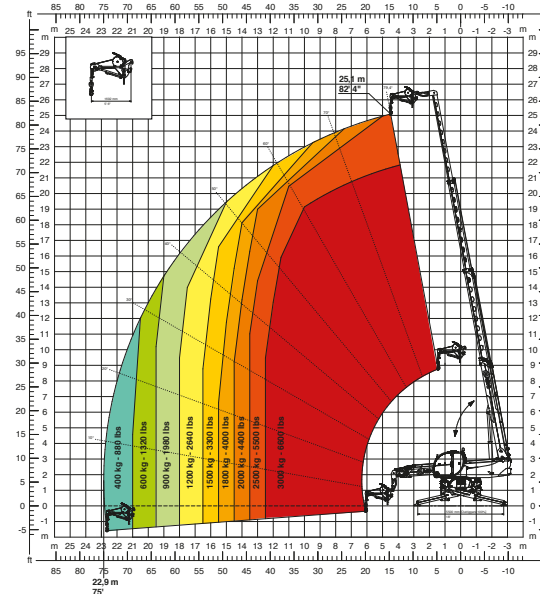
H 6
13200 lbs hook



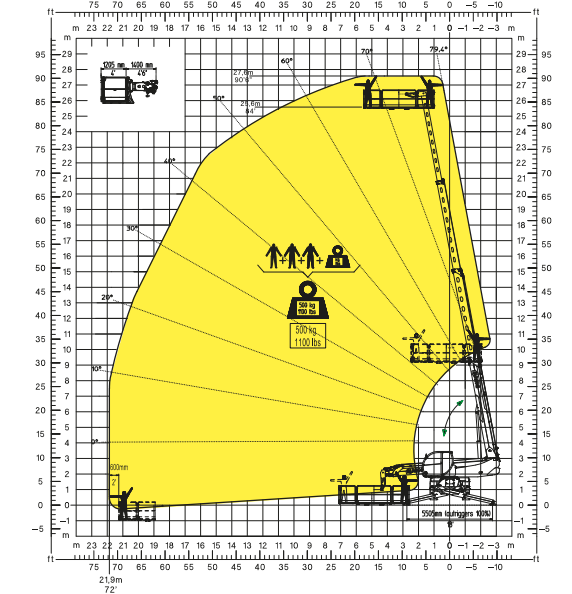
W 6
Winch 13200 lbs



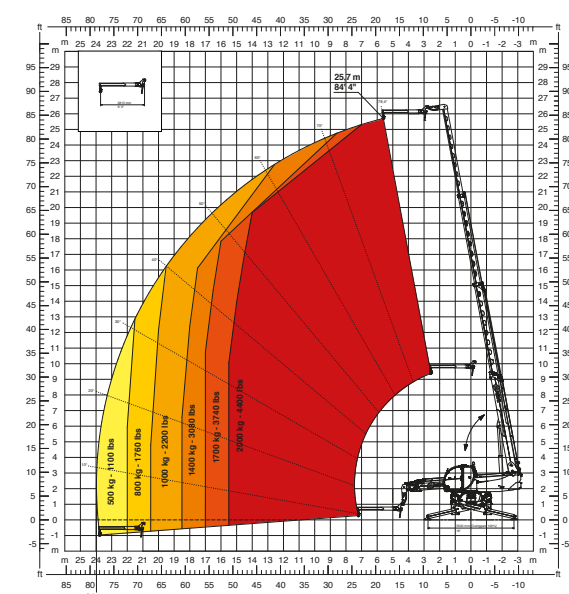
JW 3000
Jib winch 6600 lbs



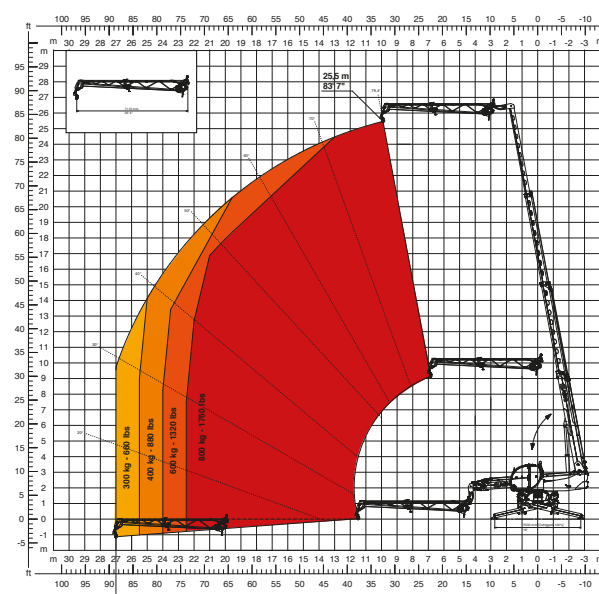
REP 2-4,5
Rotating extendable men platform 1100 lbs



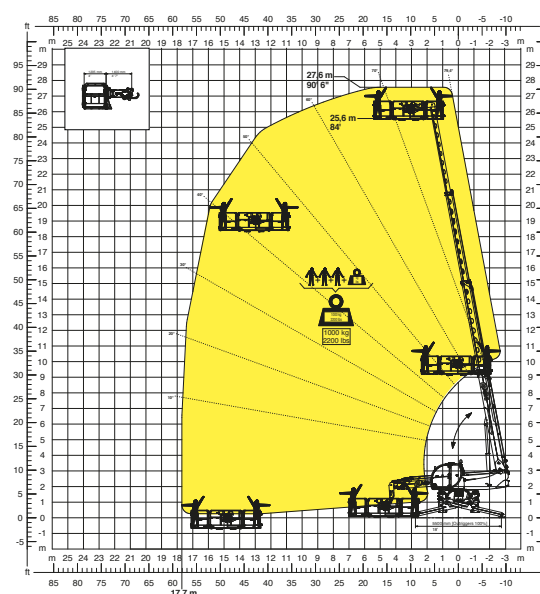
J 2000
Jib 4400 lbs



JW 800
Jib winch 1760 lbs



REP 10.2-4,7
Rotating extendable men platform 2200 lb



REP 5,2-6,5 W0,3
Platform 1100 lbs with winch 660 lbs

